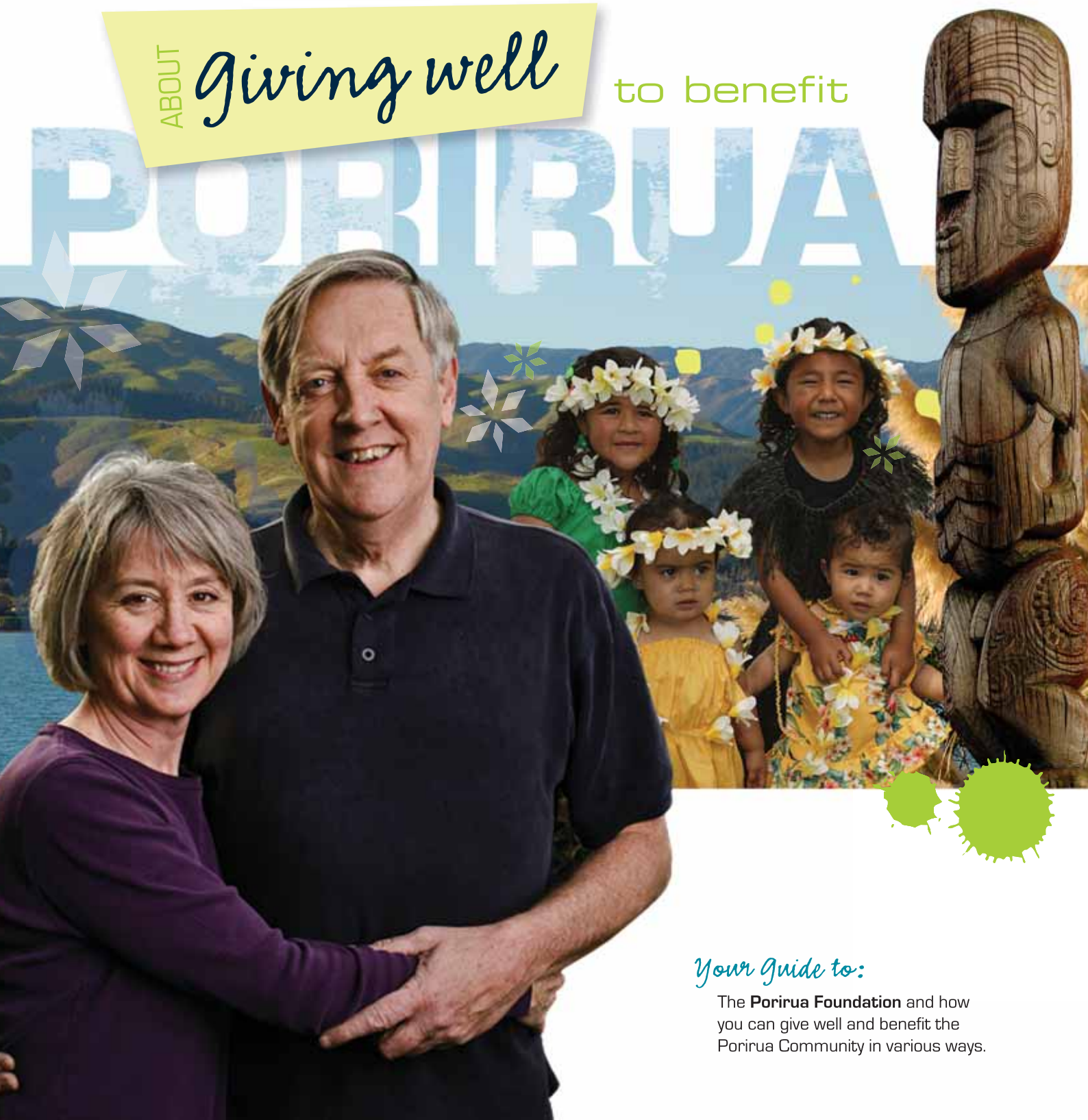


ABOUT *giving well*

to benefit



Your Guide to:

The **Porirua Foundation** and how you can give well and benefit the Porirua Community in various ways.

What is **THE** PORIRUA FOUNDATION?



The **Porirua Foundation** is a charitable trust serving the Porirua community; our guiding philosophy is to *cultivate generosity by the people, to create prosperity for the community.*

OUR VISION

Generosity by the **people**,
prosperity for the **community**.

OUR MISSION

The Porirua Foundation is a Trust which enables citizens to participate in the shaping of Porirua, growth of its people, care of their environment and the development of their community today and in the future.

Through prudent decision making, careful stewardship and dynamic leadership The Porirua Foundation will stand as a beacon for measurable and sustainable philanthropy here in New Zealand and abroad.

Our Purpose

Whether in times of prosperity or poverty, giving is an act that changes the world. Our purpose is to support, manage and connect local philanthropy with local endeavours.

Our Objectives:

PROMOTE and encourage generosity among the people of New Zealand towards community organisations, facilities and charitable purposes.

ESTABLISH and administer separate Named Endowment Funds within the Trust Fund in order to fulfil the wishes of individual donors who wish to support community organisations, facilities and for any charitable purpose.

OBJECTIVELY assess and respond to the needs of the community direction along with leadership in charitable matters.

PROVIDE support, both financial and otherwise, for community organisations, facilities and for any charitable purpose.

LEAD our community in fundraising with reliable, confident, cohesive, carefully selected Trustees and advisory panel members.

ENSURE that donor wishes are carried out and that all donations reach their intended audience or purpose.

What is a Community Foundation?

A foundation is an entity that is established as a nonprofit organisation or a charitable trust, with a principal purpose of making grants to unrelated organisations or institutions or to individuals for charitable purposes. This broad definition encompasses two foundation types: community foundations and private trusts.

The most common distinguishing characteristic of a community foundation is that it receives its assets from multiple sources, which may include private trusts, individual donations and bequests, as well as support from local and central government agencies and in turn the community foundation supports a variety of causes, issues and initiatives. In contrast a private trust receives its funds come from one source, whether an individual, a family, or a corporation and is typically geared towards a specific cause or issue.

The emergence of community foundations in New Zealand is a response to the ever increasing awareness that people have a real desire to make a lasting difference to their people, their environment and their community.

Who Are We?

The **Porirua Foundation** is an evolution of the Porirua Community Appeals Trust (established in 1997) and is built upon a strong and positive record of supporting community initiatives and projects.

The **Porirua Foundation** is incorporated as a charitable trust board under the Charitable Trusts Act 1957 and registered as a charity under the Charities Act 2005 **No. CC29440**.

The **Porirua Foundation** comprises a Board of Trustees and will appoint at a future date an executive officer and an administration assistant.

The Trustees are respected people drawn from the community, known for their generosity and philanthropy as well as their professional skill, community knowledge and business acumen. The Board is supported in its duties by a Programme Advisory Committee and an Investment Advisory Committee.

Trustees are appointed to the Board in accordance with the following process:

- One by appointment of the Mayor of Porirua City Council;
- One by appointment of the New Zealand Law Society (registered and practising law in the Porirua region);
- One by appointment of the Porirua Chamber of Commerce;
- One by appointment of the New Zealand Institute of Chartered Accountants (registered and practising accountancy in the Porirua region);
- One by appointment of the Ngati Toa Kaumatua Council;
- One by appointment of the Mayor of Porirua City Council to represent the Pacific Island communities in Porirua
- Additionally, the Board may at its discretion, appoint a further four Trustees.

TRUSTEES

Chris Kirk-Burnnand
David Oughton
Gagau Annandale-Stone
David Miller
Roger Holmes Miller
Graham Mourie
Thomas Kenny
Kevin Watson
David Wilson



Contact

admin@poriruafoundation.org.nz

chair@poriruafoundation.org.nz

P O Box 50003
Porirua 5240

As time goes by the depth and breadth of charitable causes supported in our region will increase.



NGATI TOA – TE TANGATA WHENUA



HOW DOES *Your Gift* BENEFIT THE COMMUNITY?

Ways to Give

There are four ways to give:

- 1 living giving
- 2 in your will
- 3 partnership
- 4 corporate giving

THINKING ABOUT A PRIVATE TRUST?

Choose the **Porirua Foundation** as the intermediary for your charitable giving.

Working with us saves you the bother and costs associated with forming, reporting and administering a private trust; what's more, the **Porirua Foundation** has the flexibility and the expertise to make your charitable wishes come true.

Living Giving: Donation/Koha

- Make donation/koha to particular projects or specific Funds during your lifetime and/or
- Establish a Named Endowment Fund, to which your contributions are added.
- Sponsorship of the Porirua Foundation through the Supporters Club.

In Your Will: Bequest/Endowment

- Leaving a gift to the Porirua Foundation in your will.
 - A specific amount or
 - A percentage of your estate.

Partnership

- Private trusts elect to partner with the Porirua Foundation and the advantages of partnering are many such as:
 - Sharing the responsibility of managing funds and administering grants.
 - Succession planning - continuous and consistent leadership.
 - Expert opinion on making investments and disbursements from the Fund.

Corporate Giving

- Porirua City Partner Programme gives recognition to corporate donations to City projects.



Benefits of Giving

People enjoy giving for a variety of reasons. Donors give to charity to show appreciation, to create change, to share resources, and to express their values and ideals.

Tax Rebate Information

- **Individuals** are able to claim a 33.3 % tax rebate for donations, up to a maximum claim equal to their annual taxable income.
- **Companies and Maori Authorities** are entitled to a deduction for donations made to charitable organisations, limited only by the amount of the company's net income.

INDIVIDUALS

You donate \$ 3,000 and your taxable income is \$35,000 – you are entitled to a 33.3% rebate of \$1000.

COMPANIES

XYZ Company Ltd donates \$20,000. The company's net income is \$200,000. The full \$ 20,000 is a deductible expense.

Individual Giving

All Donations Are Welcome

Charitable giving is important to our social, cultural, environmental and economic well-being in New Zealand.

Giving any amount to the Porirua Foundation further enhances the delivery of services and development of facilities we need to make a positive and lasting difference for the communities of Porirua.

Suggestions For Giving

- **Named Endowment Funds**
 - Establish a fund now, contribute over time, and make provision in your will.
 - 'Living-Giving' builds a tradition of philanthropy and generosity in your family.
- **Donations**
 - Give any amount to a charitable cause, special interest area or to a Named Endowment Fund.
 - Provide support for your community immediately.

Individually
we can make a
difference;
Collectively
we make a
bigger difference.

Join Us in the Porirua Foundation Supporters Club

Donor Members

All donors gain automatic membership of the Porirua Foundation Supporters Club.

We want to share and celebrate the ways by which your donation has enhanced the quality of life of our community. We can do this through regular newsletters and donor functions.

Foundation Members

Foundation Members provide in-kind and financial support towards the operation of the Porirua Foundation without whom the Foundation could not get on with the job of raising and administering funds and making disbursements to charitable causes.

9 REASONS TO GIVE TO THE PORIRUA FOUNDATION

1. **Show appreciation** for help and support that you, or a loved-one, may have received from the community.
2. **Lead by example** – nurture a philanthropic spirit in your family or employees.
3. **Create an enduring legacy** that improves the quality of life in your region.
4. **Support causes** that matter to you.
5. **Share with others** your ideals, values and resources.
6. **Get that feeling** of having done something significant and valued.
7. **To access expert advice** and stewardship in fund management and charitable giving.
8. **Tax deductions** on donations.

NGATI TOA – TE TANGATA WHENUA

Corporate Giving

The Porirua Foundation actively works towards achieving the best possible outcomes for corporate donors.

Porirua City Partners Programme

Porirua City Council launched the Porirua City Partners Programme in November 2009; it forms part of an integrated funding strategy for major community projects in Porirua City.

Successfully funding major city projects requires input and support from all facets of the community. The Porirua City Partners Programme is a means by which public funders and corporate sponsors can contribute to and be recognised for their support of major community projects.

For projects of regional significance, the Porirua Foundation, Porirua City Council and the Porirua City Partners work together to raise funds. This collaborative approach makes best use of the expertise, resources and knowledge abundant in our business and civic community whilst minimizing the costs to ratepayers.



Many organisations contribute in a meaningful manner to the success of our community; The Porirua City Partners Programme recognises three levels of support – Rimu \$10k+ per annum, Totara \$30k+ per annum, Kauri \$50k+ per annum. For more information visit www.pcc.govt.nz

What Happens to Our Gift?

Some donors may wish to have a high degree of input into the distribution of grants, whereas others may wish to leave grant making to the discretion of the Porirua Foundation.

The Porirua Foundation works with donors and their advisers to achieve desired charitable outcomes. Donations and bequests are managed with a combination of the following:

Named Endowment Fund

- Establish a Fund in your lifetime with a donation of \$50,000 or more.
- Additional contributions are made to this Fund by donation or bequest.
- The Porirua Foundation works alongside you and your advisers to identify the recipients of grants from your Named Endowment Fund.

Contribute to An Existing Fund:

Donations and bequests are made to specific Funds managed by the Porirua Foundation for example, the Porirua Performing Arts Theatre.

Specific Giving: Donations and bequests are applied to a specified area of interest as expressed by the donor, for example: encouraging the performing arts, development of sporting facilities, supporting mental health initiatives, promoting Te Reo in schools.

Non-Specific Giving: Donations and bequests are applied to a variety of managed Funds from which grants are made for the betterment of the Porirua community. In response to community need, the Foundation may elect to direct funds to a function, group, or cause, even though they have no overriding trust representing them.

How much of our gift reaches the community?

It is our policy that donation capital remains intact; 100% of your donation will be utilised for the betterment of the community and supporting charitable causes. The first 1% of interest earned on investment will be deducted annually to cover administration costs.

The Foundation aims to be responsive to the needs and direction of the community.

We encourage donors to be flexible and to apportion only part of their donation to specific funds.

Getting the Job Done

The Porirua Foundation is built upon a strong and positive record of supporting a wide range of community initiatives and projects. Whilst continuing to make disbursements to other community causes, the Foundation chooses to concentrate fundraising efforts towards one major project at a time. Substantial funds have been raised for art and culture, leisure, recreation and sporting facilities.

Completed



1998 Pataka Museum of Arts and Cultures

Pataka Museum of Arts and Cultures is a community facility of national importance, it is dedicated to showcasing Maori, Pacific Island, New Zealand, Asian and international contemporary art and culture. Pataka is a place of gathering and the cultural hub of Porirua. Entry to Pataka is free.



1999 Arena Aquatics Centre

The Arena Aquatics Centre is housed within the Te Rauparaha Arena complex; opened in 1999, refurbished in 2008, this multi-pool aquatic centre is valued by the community as a recreational facility and as a meeting place. It forms an important feature in the leisure and recreation landscape of Porirua.



2008 Te Rauparaha Arena

Te Rauparaha Arena is a regional sports and events facility which is located in the cultural hub of Porirua, next to Pataka Museum of Arts and Culture. The Arena opened in November 2008 and events held so far include gala dinners, international and national sporting events such as the Oceania World Qualifying Volleyball Championships, the Porirua Sports Awards, the Home, Living and Leisure Show, and the Wedding and Bridal Expo.

Funding Your Cause

Enhanced Benefits for Recipients

Economies of Scale

- The annual returns from the Porirua Foundation are likely to be higher than most charities could achieve because of economies of scale in terms of the investment.
- As the capital funds increase so too will proceeds of investment thereby allowing for a greater number and variety of causes to be supported.

Planning Ahead

Specific bequests left to the stewardship of the Porirua Foundation benefit their chosen charity in several ways:

- The charity will know that this is a permanent source of income and can plan accordingly.
- The charity will not have to record the capital as part of its assets and this capital will therefore be 'off balance sheet'.

Current



Porirua Performing Arts Theatre

Porirua has a great history in the performing arts; the Performing Arts Theatre brings together the Porirua City Council, Whitireia Community Polytechnic, Ngati Toa and our community groups. Completion is expected in 2012.

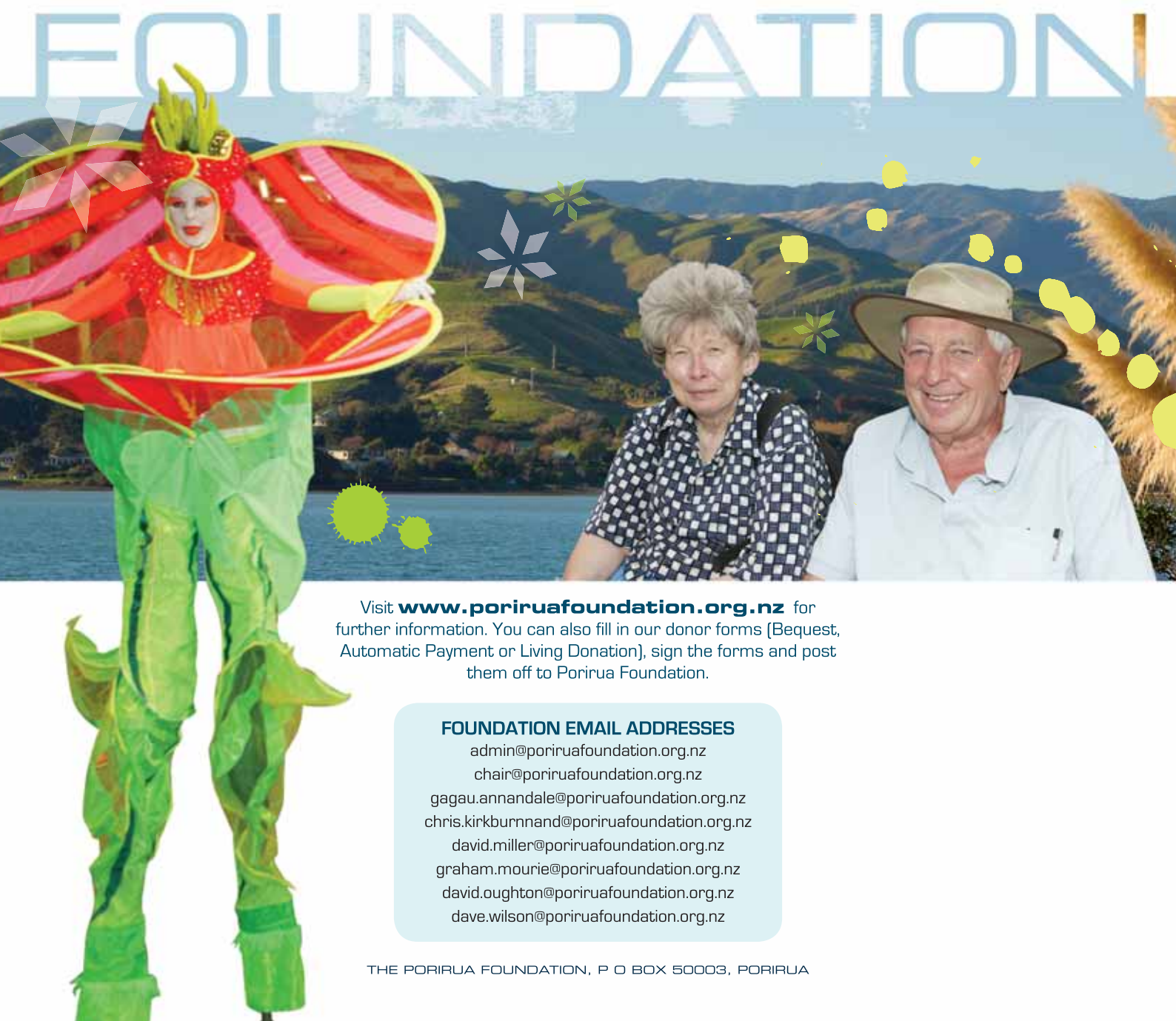


Future

The Porirua Foundation's fundraising work is determined by community opinion and need. Our future efforts may be directed towards, education, community services, or our environment for example:

- Adventure Playground (CBD)
- Bothamley Park
- Major Exhibitions
- Mountain Bike Park
- Onepoto Boardwalk
- Pauatahanui Inlet Walk
- Scholarships – Sports, Education, Community Service





Visit **www.poriruafoundation.org.nz** for further information. You can also fill in our donor forms (Bequest, Automatic Payment or Living Donation), sign the forms and post them off to Porirua Foundation.

FOUNDATION EMAIL ADDRESSES

admin@poriruafoundation.org.nz
chair@poriruafoundation.org.nz
gagau.annandale@poriruafoundation.org.nz
chris.kirkburnnand@poriruafoundation.org.nz
david.miller@poriruafoundation.org.nz
graham.mourie@poriruafoundation.org.nz
david.oughton@poriruafoundation.org.nz
dave.wilson@poriruafoundation.org.nz